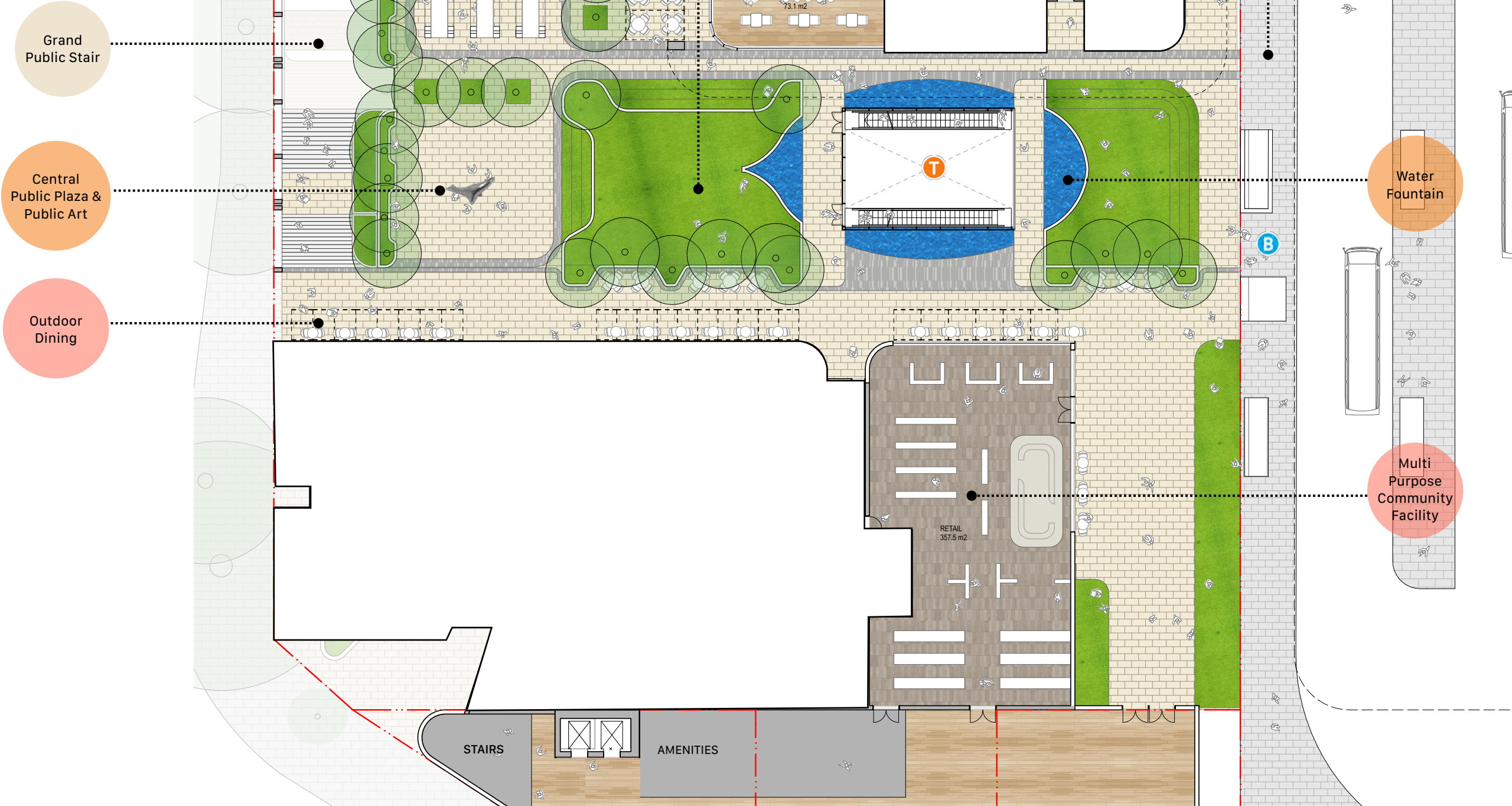
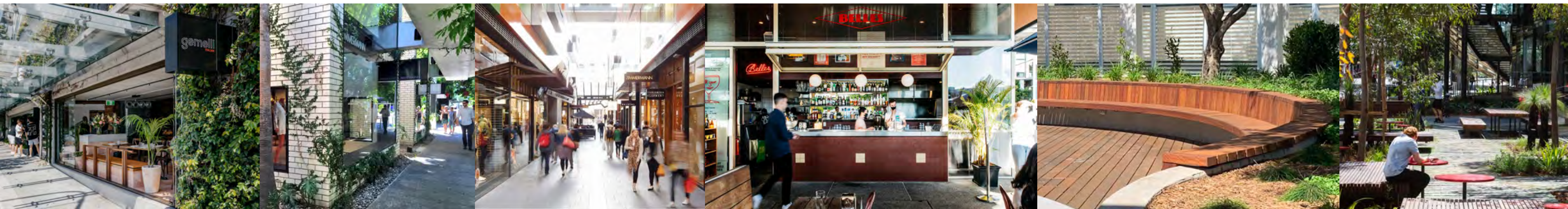


Village Green

Edgecliff Centre

Creation of the Village Green which delivers 3,000 Sqm of publicly accessible community infrastructure including a central public plaza, open green spaces, diverse seating areas, public art, community facilities, connection to public transport and retail as well as opportunities for public recreation opportunities.





Reference Design

Reference Design

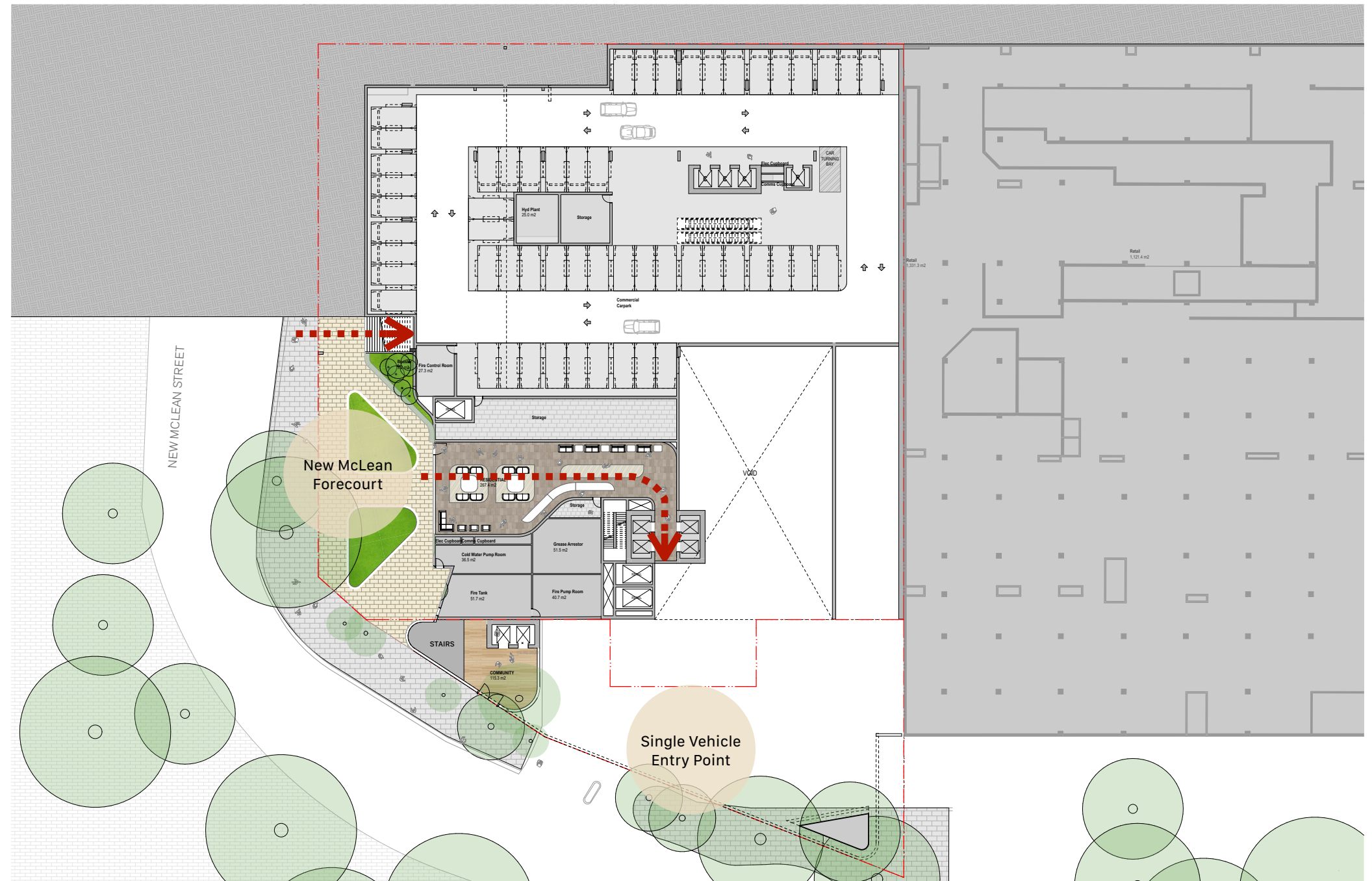
Lower Ground Plane Strategy and Public Domain Concept

The ground floor plan includes a residential entry point to the south west corner, providing a welcoming and inviting arrival experience for residents and visitors alike. The entry is thoughtfully located to in this area of the site to address the existing residential nature of New McLean Street. It is designed to create a sense of community and encourage interaction among residents and locals, while also ensuring that the building is easily accessible for those with mobility issues. Positioning the residential entry on this section of New McLean Street helps activate a section of street that is not suitable for retail activation and is currently unactivated.

The vehicular entry and exit points have been rationalised significantly and is located in a single location on the south. These accommodate both residential and commercial vehicles, as well as service vehicles. Rationalising this creates an improved interface along New McLean Street however also improves the traffic movement adjacent to New South Head Road Intersection and ensures that the building is functional and accessible, with ample space for deliveries and waste pickups, as well as parking for residents and visitors. Access arrangements for the Eastpoint Tower parking is maintained. The design of the vehicular entry also considers safety and convenience, with clear signage and lighting to ensure that drivers can easily navigate the area.

Further improved activation to the south is provided via the elements community offering that sits above.

Basement 1





Residential Entry



Reference Design

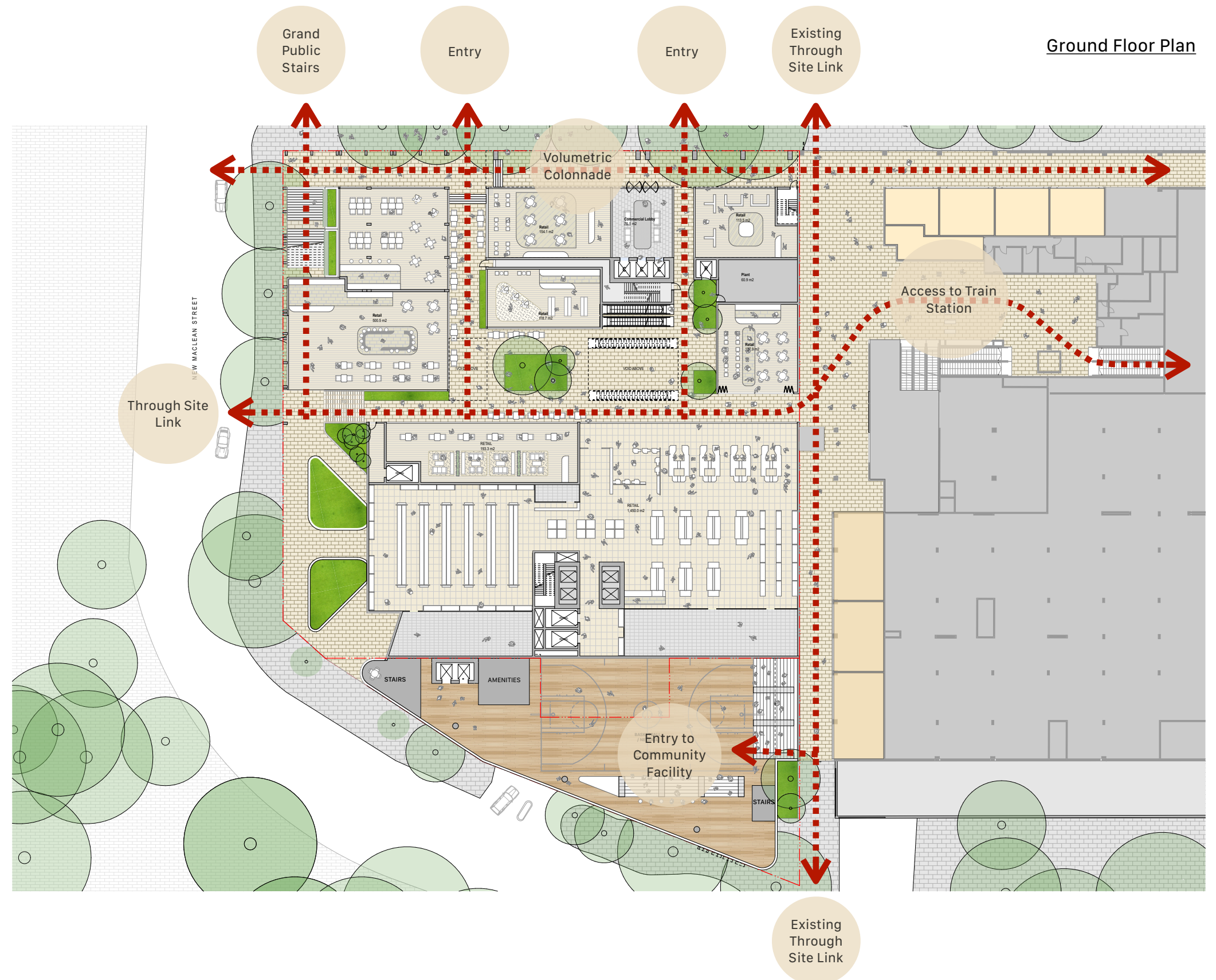
Ground Plane Strategy and Public Domain Concept

Laneways are a key component of the activation strategy for the ground plane. Well considered, laneways play an important role in contemporary placemaking and urban development and offer opportunity for retail density with access to fresh air and natural daylight, whilst also providing areas of respite along the vehicle dominated corridor.

A new east west spine terminates with connection to the existing rail station whilst level changes enable access to the adjoining retail centre, bus interchange and towards Ocean Street and Double Bay. This arrangement is further enhanced with a series of north south laneways that connect this spine to New South Head Road. Smaller retail offering are therefore located to the north, while larger retail spaces are located toward the south of the site where less porosity is required.

The retail edge along New South Head Road is characterised by a 4 storey colonnade. This creates a transition space between the traffic and associated noise from New South Head Road and the new retail environment, providing opportunities to linger in a protected area.

Alongside the colonnade the design concept features a generous grand public staircase. The stair is located in the prominent corner of the site with high levels of visibility, accessibility and amenity creating an inviting and permeable entry through the podium.





Ground Plane along New South Head Road



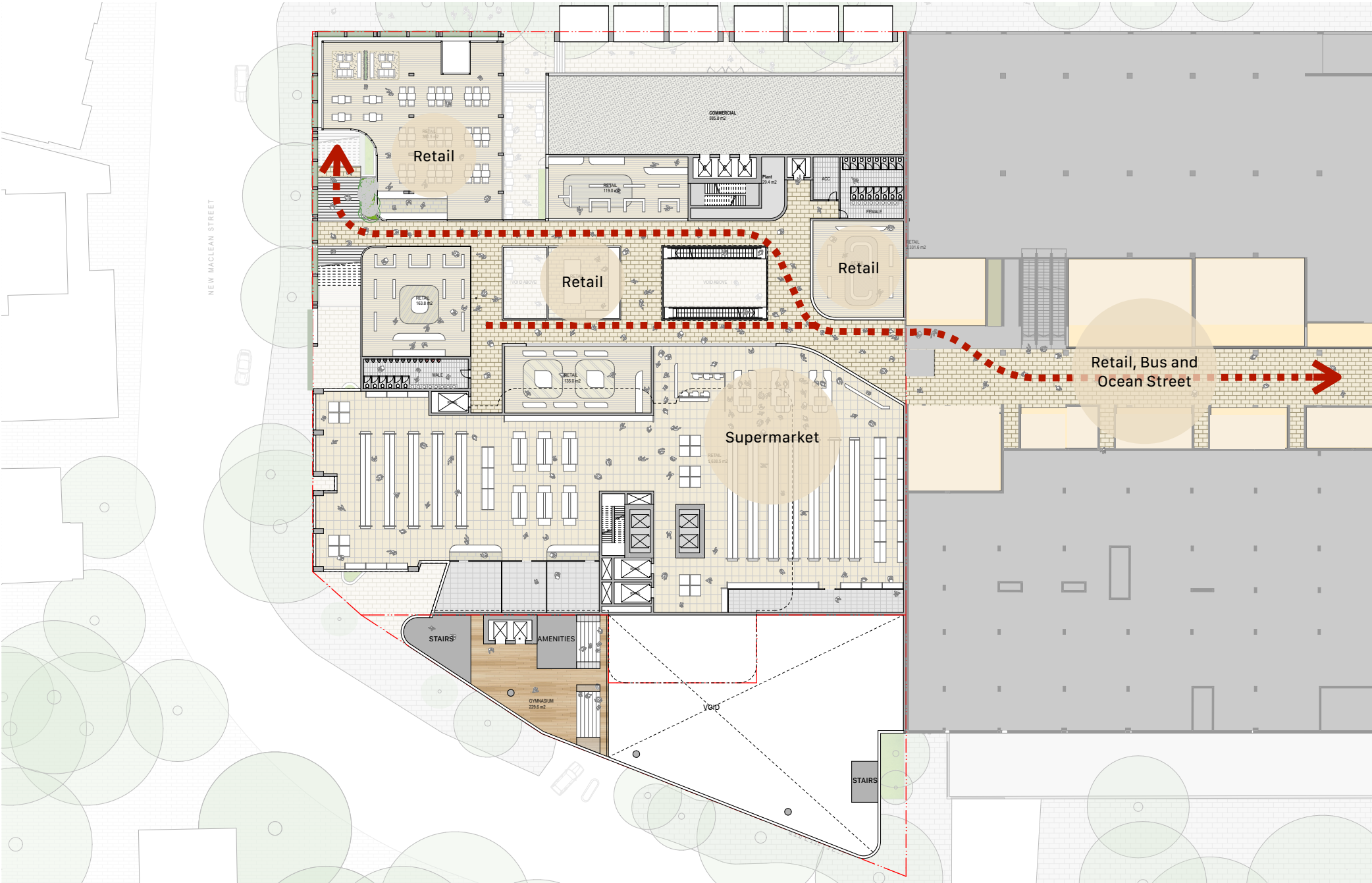
Reference Design

Level 01 - Public Domain Concept

The Level 01 plan features direct and visible connections via public stairs escalators and lifts allowing easy access to the upper levels of the podium. There are sufficient, flexible, accessible retail spaces on this level to ensure appropriate activation. These upper levels include provision for a large supermarket, providing convenience and accessibility for residents and visitors alike. The design also includes a direct connection to the neighbouring retail retail centre, bus terminal and Ocean Street creating a cohesive shopping experience and promoting a sense of community with a whole of block design ethos.

Furthermore, the plan features a sports hall community facility to the south, providing a space for residents to engage in physical activity and social interaction. This facility is designed with the community in mind, providing a space for people to come together and engage in healthy activities.

Level 1



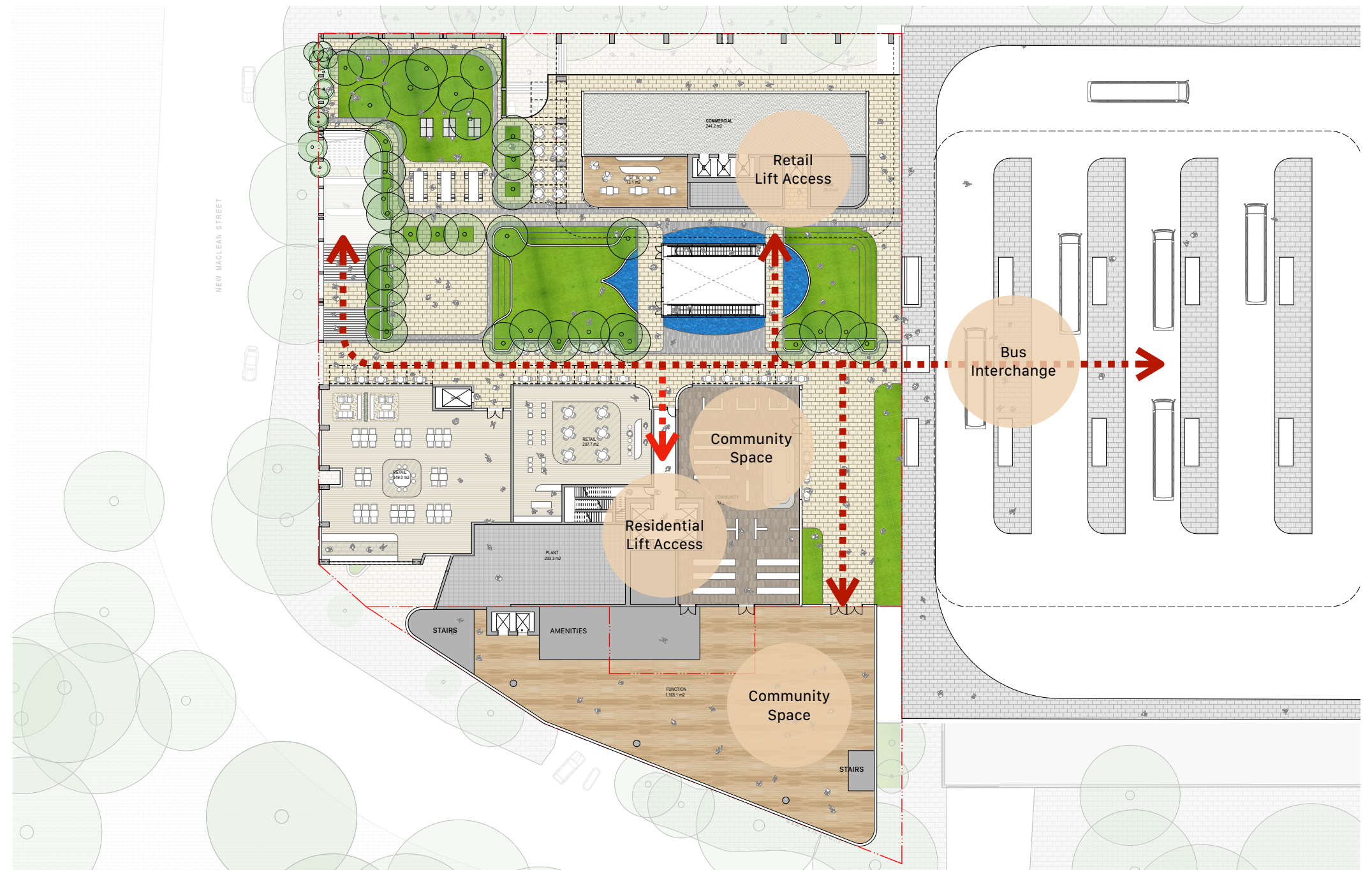
Reference Design

Level 02 - Public Domain Concept

The publicly accessible plaza and open green space is a key element of the proposal featuring several amenities and facilities for the community. Prominent features of this level is the large central piazza surrounded by landscaped public open space, providing a place for people to relax and enjoy the surroundings. It features iconic Sydney CBD and Harbour views and Vistas, flexible spaces such as an amphitheatre, shaded and open grass areas, seating areas and opportunities for recreational and public art programming. It is accessed via the generous public stair integrated within the prominent gateway corner of site providing a purposeful public connection through a permeable flora landscaped podium to the open green space.

The plan also includes a direct connection to the bus interchange, neighbouring retail centre & building and Ocean Street making it convenient for residents to travel to other parts of the LGA. Additionally, the level features a retail lift and access, promoting accessibility to the shops on this floor.

Level 2



Reference Design

Landscape Concept

The landscape design for Edgecliff Centre is a symphony of nature, architecture, and community. The vision behind the design is to create a sense of destination, where visitors and residents alike can come together and connect in a vibrant and dynamic public space.



The design aims to transform the site into a vertical, highly landscaped village, with greenery and communal spaces woven seamlessly into the fabric of the urban environment. The integration of seating throughout the space creates opportunities for people to rest, relax, and enjoy the surroundings.



From the public space on level 2, visitors can take in breathtaking views of the surrounding area towards the Sydney CBD and harbour. The integration of nature into the urban environment creates a sense of harmony, inviting visitors to take a moment and appreciate the environment around them.



The generous public stair offers a unique and immersive experience. The stair is a vertical landscape, lush with greenery, creating a sense of wonder and enchantment.

